



NEW!

**Tour #K3 Ali'i Movie Tours with Scenic Hanalei
BLUE DIAMOND TOUR**

Our newest and most exciting tour takes you on an action packed Hawaiian Hollywood odyssey where you will explore some of the most romantic, exciting and adventurous movie locations in the world and enlighten you with the rich history of our island. This unique live narrated tour with specially licensed video scenes from the various movies make this a must do activity on Kauai. You will not only watch scenes from amazing big screen movies; you will actually stand in or view the exact spots of the shoots like you were one of Hollywood's most famous stars.

The aim of the **ALL NEW Ali'i Movie Tour with Scenic Hanalei** is to allow people the opportunity to experience both fiction and reality, letting them feel as though they were actually a part of the TV show or movie being filmed ultimately bringing them closer to the characters themselves.

This tour is equally fantastic for tourists and locals, families and groups of friends.

Your guide will entertain and inform you as you visit over 15 locations, **including:**



- Ahukini Pier
- Hanamaulu Bay
- Otsuka's
- Kealia Over Look
- Haupu Ridge
- Poipu at Kipu Kai
- Aliomanu
- Hanalei Pier
- Lumahai Beach
- Ching Young Village – for FIT's
- Hanalei Valley Lookout
- Makaiwa Resort Quest
- Opaeka'a Falls
- Coco Palms
- Menehune Fish Pond

Famous Movie Scenes include:



- South Pacific
- Jurassic Park
- Blue Hawaii
- Donovan's Reef
- Pagan Love Song
- Beachhead
- Uncommon Valor (due to sensitivity to graphic scenes the video scene may not be shown*)
- Sadie Thompson
- Six Days & Seven Nights
- Wackiest Ship in the Navy
- Raiders of the Lost Ark
- More...

Inclusions:

- Complimentary hotel pickup and returns in deluxe touring vehicles included from various hotels & resorts.
- Deluxe mini-coach services with Professionally certified narrated tour
- Custom in vehicle video and movie scenes

* ***Due to the graphic nature of Uncommon Valor, this video clip WILL NOT be shown in the presence of children under the age of 13. Prior to showing the clip, all passengers will be asked if the video clip is not acceptable for viewing and if anyone suggests not showing it, then it will NOT be shown.***

Pick Up/ Drop Off

Time & Location:

Tour Prices:

Poipu Area Pick ups begin at 7:15 am
Return 2:25-2:45 pm approximately
Adults \$98.00 (tax not included)
Children 3-11 \$66.00 (tax not included)

Tour operates:

Starting January 3, 2009
Operates Daily
Tax rate of 4.167%

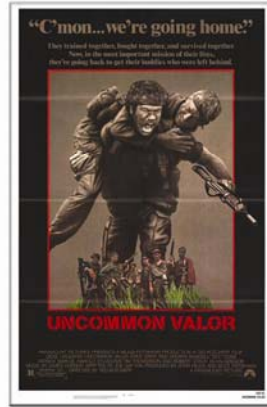
Polynesian Adventure Tours, Inc. / Gray Line Hawaii is Hawaii's largest and most premier tour and private charter company. Gray Line has been giving tours in Hawaii since 1927 and has over the years touched the hearts and minds of millions of Hawaii visitors.

NEW!

Tour #K3 Ali'i Movie Tour with Scenic Hanalei Movie Posters



Pagan Love Song



Uncommon Valor



The Wackiest Ship in the Army



Donovan's Reef



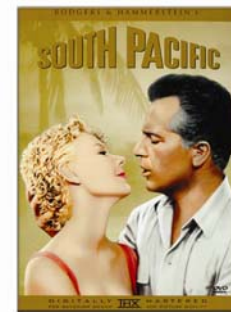
Miss Sadie Thompson



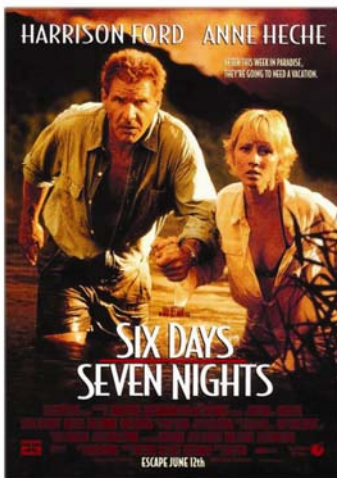
Blue Hawaii



Voodoo Island



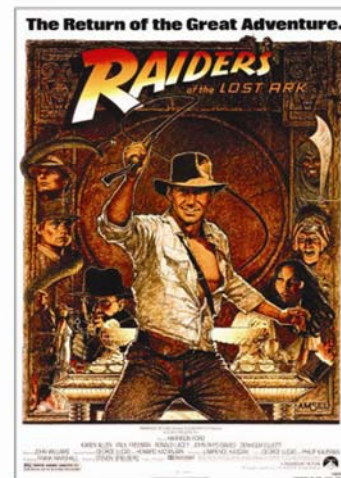
South Pacific



Six Days Seven Nights



Jurassic Park



Indiana Jones Raiders of the Lost Ark