



POLYNESIAN ADVENTURE TOURS

Aloha in Motion™



Tour #K1 Waimea Canyon & Wailua River Tour

Enjoy a day filled with the beauty, legends, and saga of the, "Garden Isle!"

On this Kauai adventure you will enjoy a day filled with the lush beauty, legends and saga of Hawaii's "Garden Isle." Journey to the majestic Waimea Canyon, which Mark Twain called, "the Grand Canyon of the Pacific". Over 10 miles long, and almost 4,000 feet deep this marvel was formed by erosion and the catastrophic collapse of the volcano that created Kauai. You will see Spouting Horn and the south coast Poipu Resorts, Koloa Sugar Mill, Queen Victoria's profile and Nawiliwili Harbor. Your journey continues with a cruise along Wailua River to the famed Fern Grotto. See the cascading Opaeka`a Falls, the birth stones, and Coco Palms featured in the famous Elvis Presley movie, Blue Hawaii.

Details:

- Waimea Canyon
- Drive by the Russian Fort
- Spouting Horn
- South coast Poipu Resort drive-thru
- View Koloa Sugar Mill, Queen Victoria's profile and Nawiliwili Harbor.
- Cruise the Wailua River (Cruise fare included)
- View the Fern Grotto
- View Coco Palms Grove, Birth Stone
- Opaekaa Falls
- No-host lunch at Poipu Grill & Bar or a Lihue restaurant (subject to change)

Inclusions:

- Complimentary hotel pickup and returns in deluxe touring vehicles included from Kauai hotels.
- Round trip air transportation
- Cruise fare for the Wailua River boat ride

Pick Up/ Drop Off:

- Hotel Pick ups begin at 6:45 am and return 4:45-6:15 pm approx. Call 808-246-0122 for current times

Tour operates:

Monday, Tuesday, Wednesday, Friday, Saturday, Sunday

Polynesian Adventure Tours, LLC

Oahu Main Office: 2880 Kili Hau Street Honolulu, HI 96819 Phone: 800-622-3011 or 808-833-3000 Fax: 808-833-9200
www.PolyAd.com



POLYNESIAN ADVENTURE TOURS

Aloha in Motion™



Tour #K1 Waimea Canyon & Wailua River Tour Photographs



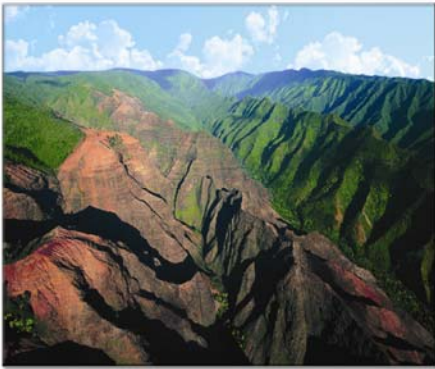
Opaeka'a Falls



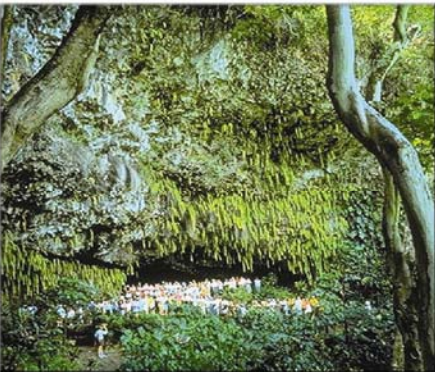
Spouting Horn Blowhole



Wailua River Mountainside



Waimea Canyon - The "Grand Canyon of the Pacific"



Fern Grotto



Wailua River



Nawiliwili Harbor

Polynesian Adventure Tours, LLC

Oahu Main Office: 2880 Kilihau Street Honolulu, HI 96819 Phone: 800-622-3011 or 808-833-3000 Fax: 808-833-9200
www.PolyAd.com



POLYNESIAN ADVENTURE TOURS

Aloha in Motion™



Tour #K2 Waimea Canyon Experience

See the magnificent "Grand Canyon of the Pacific"

This half day Kauai tour will take you to explore panoramic Waimea Canyon which Mark Twain called, "the Grand Canyon of the Pacific." Over ten miles long, and almost 4,000 feet deep, this marvel was formed by erosion and the catastrophic collapse of the volcano that created Kauai. See Hanapepe Lookout, exciting Spouting Horn and the south coast Poipu Resorts made famous in the Elvis Presley movie, Blue Hawaii. View Koloa Sugar Mill*, Queen Victoria's profile* and Nawiliwili Harbor*. *Will not be seen by Poipu passengers.

Details:

- Hanapepe Lookout
- Waimea Canyon, the Grand Canyon of the Pacific
- See the Spouting Horn Blowhole at Poipu
- South coast Poipu Resort drive-thru
- View Koloa Sugar Mill & Queen Victoria's profile
- No-host lunch

Inclusions:

- Complimentary hotel pickup and returns in deluxe touring vehicles included from Kauai hotels.

Pick Up/ Drop Off

Hotel Pick ups begin at 7:15 am and returns at 2:45 pm approx.
Call 808-246-0122 for current times

Tour operates:

Monday, Tuesday, Wednesday, Friday, Saturday, Sunday



Spouting Horn Blowhole



Nawiliwili Harbor



Waimea Canyon



Waimea Canyon - The "Grand Canyon of the Pacific"

Polynesian Adventure Tours, LLC

Oahu Main Office: 2880 Kilihau Street Honolulu, HI 96819 Phone: 800-622-3011 or 808-833-3000 Fax: 808-833-9200
www.PolyAd.com



POLYNESIAN ADVENTURE TOURS

Aloha in Motion™



Tour #K3 Kauai Movie Adventure **BLUE DIAMOND TOUR**

Our newest and most exciting tour takes you on an action packed Hawaiian Hollywood odyssey where you will explore some of the most romantic, exciting and adventurous movie locations in the world and enlighten you with the rich history of our island. This unique live narrated tour with specially licensed video scenes from the various movies make this a must do activity on Kauai. You will not only watch scenes from amazing big screen movies; you will actually stand in or view the exact spots of the shoots like you were one of Hollywood's most famous stars. The aim of the **ALL NEW Ali'i Movie Excursion & Scenic Hanalei** is to allow people the opportunity to experience both fiction and reality, letting them feel as though they were actually a part of the TV show or movie being filmed ultimately bringing them closer to the characters themselves.

This tour is equally fantastic for tourists and locals, families and groups of friends.

Your guide will entertain and inform you as you visit over 15 locations, **including:**

- Ahukini Pier
- Historic Kapaa Town
- Kealia Over Look
- King Kong Profile/ Hole in the Mountain
- Aliomanu Estates
- Hanalei Pier
- Anini Beach
- Ching Young Village
- Hanalei Valley Lookout
- Royal Coconut Coast
- Opaeka'a Falls
- Coco Palms

Famous Movie Scenes include:

- South Pacific
- Jurassic Park
- Blue Hawaii
- Donovan's Reef
- Pagan Love Song
- Beachhead
- Uncommon Valor (due to sensitivity to graphic scenes the video scene may not be shown*)
- Six Days & Seven Nights
- Wackiest Ship in the Army
- Raiders of the Lost Ark
- More...



Inclusions:

- Complimentary hotel pickup and returns in deluxe touring vehicles included from various hotels & resorts.
- Deluxe mini-coach services with Professionally certified narrated tour
- Custom in vehicle video and movie scenes

*** Due to the graphic nature of Uncommon Valor, this video clip WILL NOT be shown in the presence of children under the age of 13. Prior to showing the clip, all passengers will be asked if the video clip is not acceptable for viewing and if anyone suggests not showing it, then it will NOT be shown.**

Pick Up/ Drop Off

Poipu Area Pick ups begin at 7:15 am

North Shore Area Pick ups begin at 7:00 am

Poipu Area Return 2:25-2:45 pm approximately

North Shore Area Return 1:00-1:30 pm approximately

Operates Monday Wednesday Saturday

Time & Location:

Tour operates:

Polynesian Adventure Tours, LLC

Oahu Main Office: 2880 Kili Hau Street Honolulu, HI 96819 Phone: 800-622-3011 or 808-833-3000 Fax: 808-833-9200
www.PolyAd.com



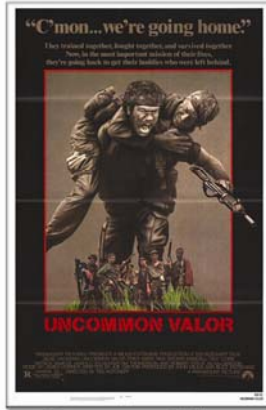
POLYNESIAN ADVENTURE TOURS

Aloha in Motion™ 

Tour #K3 Kauai Movie Adventure Movie Posters



Pagan Love Song



Uncommon Valor



The Wackiest Ship in the Army



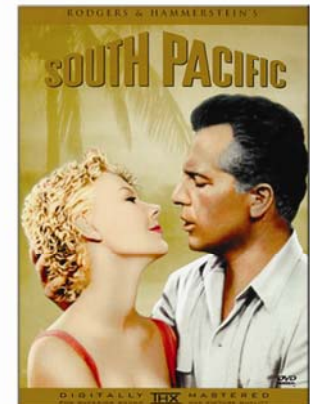
Donovan's Reef



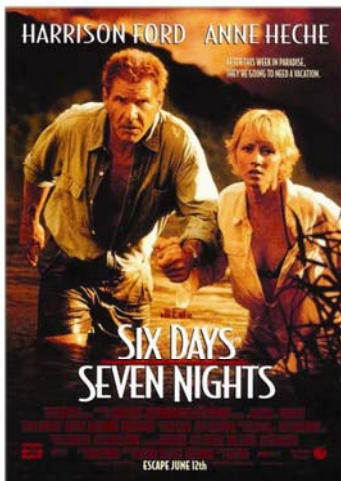
Miss Sadie Thompson



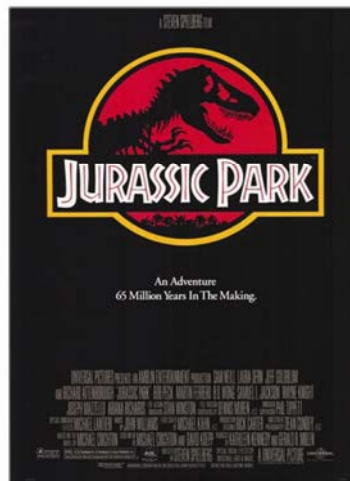
Blue Hawaii



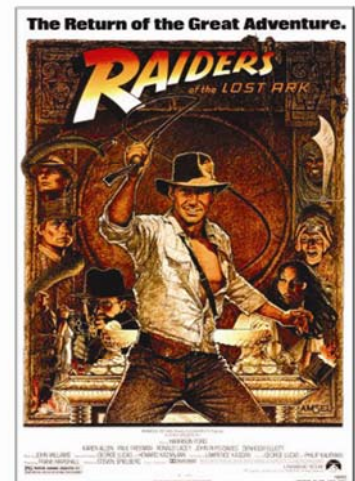
South Pacific



Six Days Seven Nights



Jurassic Park



Indiana Jones Raiders of the Lost Ark

Polynesian Adventure Tours, LLC

Oahu Main Office: 2880 Kilihau Street Honolulu, HI 96819 Phone: 800-622-3011 or 808-833-3000 Fax: 808-833-9200
www.PolyAd.com



POLYNESIAN ADVENTURE TOURS

Aloha in Motion™



Tour #A2 Arizona Memorial & USS Missouri Kauai to Oahu

Stand in the shadow of heroes as you experience the bookends of WWII!

This historic Oahu tour from Kauai will take you on a patriotic journey from the site of the Japanese attack on Pearl Harbor to the signing of the armistice on the USS Missouri. You will board the Navy launch for a trip into history across Pearl Harbor to the Arizona Memorial and explore the USS Missouri, the last battleship built by the US Navy, which served from World War II through Desert Storm. The Missouri was the site of the 1945 Japanese surrender to the Allies. Your historic journey will continue with historic attractions of downtown Honolulu including Kawaiahao Church, Iolani Palace, the only royal palace on American soil, State Library and Archives, the famous statue of King Kamehameha, Honolulu Hale and the Mission Houses Museum. Before we take you back to Maui you will experience the serenity of Punchbowl National Cemetery of the Pacific and Courts of the Missing.

Details:

- Arizona Memorial Visitor Center
- Arizona Memorial
- Punchbowl National Memorial Cemetery of the Pacific
- Kawaiahao Church, State Library and Archives, City Hall, the Mission Houses
- Iolani Palace, King Kamehameha Statue
- No-host lunch in Waikiki
- Diamond Head Crater drive-through (if time permits)
- USS Missouri

Inclusions:

- Complimentary hotel pickup and returns in deluxe touring vehicles included from Kauai hotels
- Round trip air transportation
- USS Missouri Admission and Guided Tour included

Government issued identification required. All passengers traveling on 1Day tours must present government issued photo I.D.'s for airline check-in. No refund given to passengers denied boarding due to lack of proper identification.

USS Arizona Memorial "No Bags Allowed" Policy

Due to the terrorist attacks on the United States and the location of the USS Arizona Memorial on an active military base, strict security measures are currently being enforced. No purses, handbags, fanny packs, backpacks, camera bags, diaper bags, luggage or other items that offer concealment are allowed in the visitor center or on the memorial. Strollers with pockets and compartments must be empty before being allowed in the visitor center. Personal cameras are allowed. Baggage storage is available for a fee.

Pick Up/ Drop Off

Call our Kauai office at (808) 246-0122 for current pickup & return times

Tour operates:

Monday through Friday

Polynesian Adventure Tours, LLC

Oahu Main Office: 2880 Kilihaui Street Honolulu, HI 96819 Phone: 800-622-3011 or 808-833-3000 Fax: 808-833-9200
www.PolyAd.com



POLYNESIAN ADVENTURE TOURS

Aloha in Motion™ 

Tour #A2 Arizona Memorial & USS Missouri Photographs



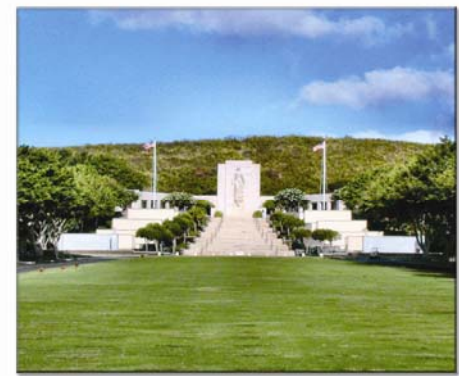
Arizona Memorial



Iolani Palace



Arizona Memorial



Punchbowl National Cemetery



Punchbowl National Cemetery



Statue of King Kamehameha



Waikiki Beach

Polynesian Adventure Tours, LLC

Oahu Main Office: 2880 Kili Hau Street Honolulu, HI 96819 Phone: 800-622-3011 or 808-833-3000 Fax: 808-833-9200
www.PolyAd.com



POLYNESIAN ADVENTURE TOURS

Aloha in Motion™



Tour #39 Pearl Harbor Heroes Adventure

Kauai to Oahu

This amazing one day fly away tour to PEARL HARBOR on Oahu is an exciting and dynamic immersion into WWII history that can not be replicated anywhere else and that will give you stories to share for generations. You will be taken on the most historic journey of your life from the site of the Japanese attack on Pearl Harbor to the signing of the Japanese surrender aboard the USS Missouri. You will see artifacts of the attack at the Visitor Center then board the Navy launch across Pearl Harbor to the Arizona Memorial. The next stop is a very special guided tour onboard one of the world's most significant submarines, the USS BOWFIN, nicknamed the Pearl Harbor Avenger. Guests will then be taken on to an active Navy Base under federal protection to explore the world's last and most famous battleship the USS Missouri, which served from World War II through Desert Storm. The Missouri was the site of the 1945 Japanese surrender to the Allies. You are then taken to the Pacific Aviation Museum on Ford Island for a special guided tour in one of Hawaii's newest and most exciting museums that will fly you back in time to when heroes saved our world.

Details:

- Live and fascinating historical narration by an expert state certified tour guide
- View the famous Arizona Memorial Visitor Center Dramatic Attack Film
- See actual artifacts of the 1941 Pearl Harbor attack
- Board the Navy launch for a ride across Pearl Harbor to Arizona Memorial
- See the "Black Tears" of oil that still bubbles to the surface today from the USS Arizona
- Take a tour of the U.S. Pacific Submarine Memorial and USS Bowfin "Pearl Harbor Avenger" Take a Tour with a specially certified guide of the world's most famous Battleship, the USS Missouri affectionately known as the Mighty MO
- Walk in the exact footsteps of General Douglas MacArthur and stand on the Surrender Deck where the world was changed forever
- Look into the Massive 16" Guns that hurl 2,900 pound projections over 23 miles with pin point accuracy
- Hear the famous Kamikaze Story where Missouri sustained a serious attack off the coast of Okinawa in 1945
- Tour the Pacific Aviation Museum Hawaii Newest and one of the most exciting museum in the Pacific

Inclusions:

- Roundtrip airfare
- Ground transportation in air-conditioned deluxe Motor Coach
- Ample Time to explore the USS Arizona National Park
- Shuttle ride to historic Ford Island
- USS Bowfin / Pacific Submarine Memorial Admission and Audio Tour included
- USS Missouri Admission and Guided Tour included
- Pacific Aviation Museum Admission and Guided Tour Included
- Food and snacks available at various locations along the tour

Government issued identification required. All passengers traveling on 1Day tours must present government issued photo I.D.'s for airline check-in. No refund given to passengers denied boarding due to lack of proper identification.

USS Arizona Memorial "No Bags Allowed" Policy

Due to the terrorist attacks on the United States and the location of the USS Arizona Memorial on an active military base, strict security measures are currently being enforced. No purses, handbags, fanny packs, backpacks, camera bags, diaper bags, luggage or other items that offer concealment are allowed in the visitor center or on the memorial. Strollers with pockets and compartments must be empty before being allowed in the visitor center. Personal cameras are allowed. Baggage storage is available for a fee. Shirt and shoes are required to board the Arizona Memorial. Swimsuits are not permitted.

Pick Up/ Drop Off

Call our Kauai office at (808) 246-0123 for current pickup & return times

Tour operates:

Monday through Friday

Polynesian Adventure Tours, LLC

Oahu Main Office: 2880 Kili Hau Street Honolulu, HI 96819 Phone: 800-622-3011 or 808-833-3000 Fax: 808-833-9200
www.PolyAd.com



POLYNESIAN ADVENTURE TOURS

Aloha in Motion™



Tour #39 Pearl Harbor Heroes Adventure Photographs



Battleship USS Missouri



Arizona Memorial



Pacific Aviation Museum



Pacific Aviation Museum



USS Bowfin

Polynesian Adventure Tours, LLC

Oahu Main Office: 2880 Kilihaui Street Honolulu, HI 96819 Phone: 800-622-3011 or 808-833-3000 Fax: 808-833-9200
www.PolyAd.com